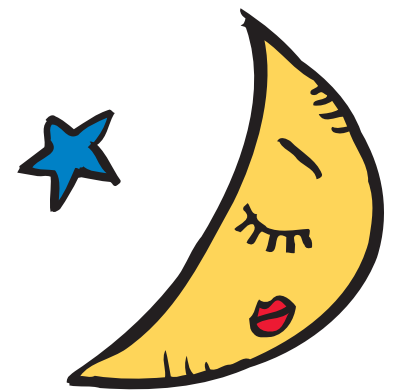




# StarBoardLink INTERACTIVE WHITEBOARD

***Transform your dry erase board into an interactive whiteboard for only \$749\****



## **Interactivity at your Fingertips**

StarBoardLink turns your dry erase whiteboard into an interactive whiteboard and converts already invested dollars (projectors, dry erase boards) into interactive, engaging classrooms. It's finger-driven and multi-touch capabilities make it easy to use.



## **Maximize your Working Space**

StarBoardLink transforms any projected image into an interactive touchscreen as small as 45 inches to as large as 90 inches. This offers ultimate flexibility, whether you're using a standard or wide format projector.

**HITACHI**  
Inspire the Next



**“The Hitachi StarBoard allows students to work on the whiteboard at the same time, a feature that teachers really value.”**

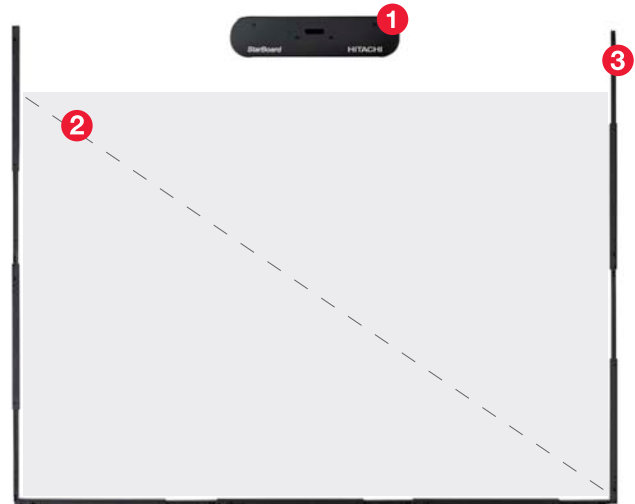
*– Scott Hill, Vista Unified School District*

# StarBoardLink

## INTERACTIVE WHITEBOARD

Save money, space, and time! A great way to break into the realm of interactive learning.

- ❶ Magnetic infrared sensor
- ❷ Active area: 45” to 90” diagonal
- ❸ Magnetic rails (mounts to dry-erase board)



### Hardware Features:

- ★ Resizable input area of 45” to 90”
- ★ Use your finger, stylus, or any object
- ★ Control using multi-touch gestures
- ★ Multi-user input feature
- ★ Magnetic installation option
- ★ StarBoard Software included

### Software Features:

- ★ Import Microsoft Office files
- ★ Export notes to various file formats
- ★ Google image search integration
- ★ Customizable search engines
- ★ Customizable interface and toolbar
- ★ Library of templates and clipart

Additional Information:

## Hitachi Solutions America, Ltd.

900 Hitachi Way Chula Vista, CA 91914  
1-800-HITACHI | starboard@hitachisolutions-us.com  
www.hitachisolutions-us.com/starboard

StarBoard® is a registered trademark of Hitachi Solutions, Ltd. in the United States and other countries. \*Special Discounted Educator Price (SDEP)

Printed 06/11